



Your Trust News

Newsletter for the members of Peterborough and Stamford Hospitals NHS Foundation Trust

Season's Greetings to all Trust Members

Trust named in TOP 100 employers list

Peterborough and Stamford Hospitals NHS Foundation Trust has been named as one of the best places to work as a nurse in the UK following a national survey.

The Trust was included in the first ever Nursing Times' Top 100 Employers survey – it was the only Trust in the county to feature.

Trusts that entered the awards were questioned on themes including; equal opportunities, family-friendly policies, flexible working, healthiness of workplace, facilities, level of staff involvement, training and development, and mentorship and induction.

The judging panel said: "This is a visionary trust which motivates people to maintain high standards of care, according to its staff. They say training and development opportunities are well supported and that senior managers are approachable and recognise the achievements of the nursing teams."

Chris Wilkinson, director of nursing, said: "We are delighted to have made the Nursing Times' Top 100 employers list. We are confident that, as an organisation, we provide good support, training and development for our nursing staff and go the extra mile to be a good employer, but it is always good for this to be recognised by an independent body.

"As the survey, and our inclusion in it, relied heavily on positive staff feedback it is even better."



Stamford Hospital



PDH entrance



Edith Cavell entrance

Fit for the Future – Hospital Savings Plan

Members should have received a separate letter from Chris Banks, chief executive, outlining the Trust's approach to required savings. We are committed to keeping all of our members updated on this issue. Further information on this and our other activities can be found on our website at www.peterboroughandstamford.nhs.uk under 'news and events'.

Annual Public Meeting

Thank you to those who attended our Annual Public Meeting, this was our best attended annual meeting since our formation as an NHS Trust in April 1993.



Members' Helpline
(01733) 343221

See middle pages for **Involvement Activities**

HELP assess our standards

Star ratings for hospitals are being replaced by a range of standards set by the Healthcare Commission.

These standards cover a wider range of activities including patient safety, food, amenities, cleanliness and health improvement.

We need to assess ourselves against these standards, and would like to do this with your help. If you are interested in attending a focus group in February 2006 to learn about the Healthcare Commission and to give your views on our performance please contact our members' helpline on (01733) 343221.



State-of-the-art

Peterborough and Stamford Hospitals NHS Foundation Trust is pleased to announce a new X-ray facility at the Edith Cavell Hospital.

The state-of-the-art angiography suite is equipped with an X-ray machine that will allow medical teams to take images of intricate blood vessels of the heart – to assess people with suspected heart conditions – and also to provide therapeutic

has now opened

treatment for other patients with illnesses such as cancer.

More than 50 patients a week – 2,600 a year – will be treated or investigated in the suite.

This is the first time one of the Trust's hospitals has had this type of equipment and it will also save some patients from having to travel to Papworth Hospital.

WWW.

Website

For up to the minute information on Peterborough and Stamford Hospitals, visit www.peterboroughandstamford.nhs.uk

Audio-taped members' newsletters

If you would like to receive a copy please contact the members' helpline on **(01733) 343221.**



Art in Hospital

Peterborough & Stamford Hospitals NHS Foundation Trust held an official ceremony this month to mark the completion of the Art in the Hospital project at the Edith Cavell Hospital.

The second phase of the project has led to 76 stunning photographs of Greater Peterborough, its people and its wildlife, hung along two of the busiest corridors in the Edith Cavell Hospital for the benefit of patients, visitors and staff.

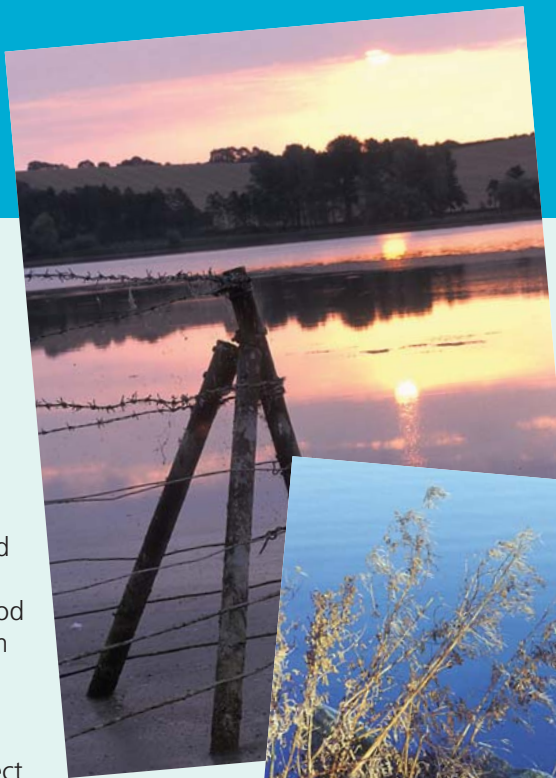
The photographs have been donated by members of the Peterborough Photographic Society and the Deepings Camera Club and the project has been co-ordinated by Adrian Stone, general manager for surgery, on a voluntary basis. The cost of creating the prints was met by staff fundraising at last year's Dragon Boat river race and by a donation from the Friends of Peterborough Hospitals.

Adrian Stone said: "I am delighted the selected prints are now up on the walls at the hospital and I would like to thank all the contributors who gave up

their time to assist us. There has been a lot of hard work involved to get to this stage. I think they are impressive and we have had some very good feedback from patients and staff.

"The beneficial effect of art in health care premises is widely recognised and we hope the photographs will be appreciated and enjoyed for years to come."

This is the second phase in the project following the placement of 22 photographs in Peterborough Maternity Unit last year.



Patient Visiting Policy

We are in the process of reviewing the Trust policy about visiting patients in hospital and are keen to hear your views.

We are reviewing the policy in relation to the following issues:

- the effect of visiting on patients (both those being visited and those around them);
- children visiting ward areas and
- infection prevention and control.

We recognise how important it is for patients to be visited by their family and friends. However we are keen to ensure that the benefit of seeing loved ones is balanced with the patients need for rest.

Other considerations need to be around the number of visitors at any one time and also when it may not be appropriate for family members to visit due to their own health, for example, we ask people who have had colds or

diarrhoea/vomiting in the last 48 hours not to visit.

The policy currently includes a clause that states that the ward manager's discretion can be used when visitors ask to see a patient outside the agreed visiting hours.

Please do give us your views by responding to the questions below so that we can take these in to account when reviewing this policy.

1 Please indicate which of these suggestions for visiting hours you would prefer:

- a) open visiting hours, i.e. anytime during the day up until 8pm (NB there is a rest period between 1 and 2pm)
- b) core visiting hours, i.e. 2pm-8pm
- c) a separate afternoon and evening visiting session (please write below how long you think these should be)

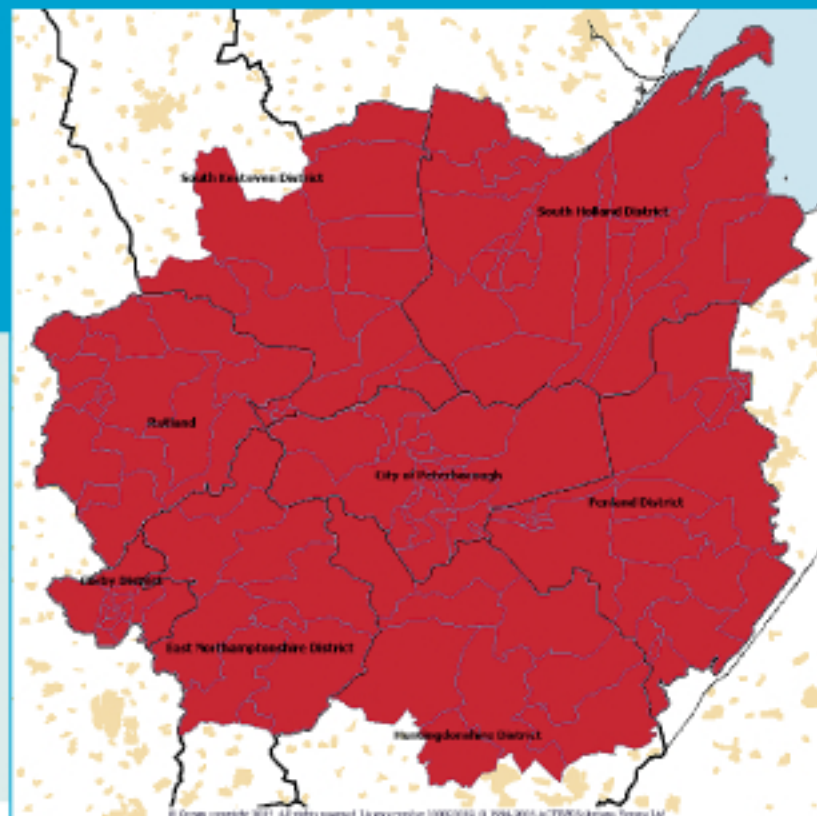
2 Should we continue to restrict the number of visitors per patient to 2-3 at any one time?

- YES NO Comments:

3 Is it appropriate to continue to welcome children at visiting times when they are supervised by a visiting adult?

- YES NO Comments:

Please feel free to make any further comments you would like to be taken into account, these can be written on a separate sheet and placed in an envelope to the address shown overleaf.



Membership Boundaries

At the Board of Governors meeting on the 1 July 2005, the Board approved changes to our membership boundaries to take into account recent changes to electoral wards. The opportunity was also taken to align membership with some of the district council and unitary authority areas and all residents living within South Holland, Fenland and Rutland are now eligible to join our public membership. This means that some members of the public who made enquiries and were unable to join can now do so.

Board of Governors meeting dates

1	Tues 10 January	4:00pm	The Conference room, ECH
1	Wed 12 April	6:00pm	St John's Boardroom, nr Peterborough Maternity Unit
1	Thur 13 July	6:00pm	St John's Boardroom, nr Peterborough Maternity Unit
1	Tues 10 October	4:00pm	Stamford Hospital Restaurant

Open Board of Directors meetings

1	Tues 7 February	2:00pm	Committee Room, ECH
1	Tues 2 May	2:00pm	Stamford Hospital Restaurant
1	Tues 1 August	2:00pm	Committee Room, ECH
1	Tues 7 November	2:00pm	Committee Room, ECH

NO STAMP
REQUIRED

Peterborough and Stamford Hospitals
NHS Foundation Trust
FREEPOST PE 1417
Peterborough
PE1 1BR