

Stamford Hospital Public Consultation

Summary Report of Results

Athene Communications
June 2007



Introduction

Peterborough and Stamford Hospitals NHS Foundation Trust, Lincolnshire Teaching Primary Care Trust and the Wellcomm Practice based Commissioning group of GPs conducted a twelve week public consultation about proposals for the future of the hospital and specifically for its joint management by the Hospitals Trust and local GPs. The consultation asked three specific questions:

1. Do you support the proposed new partnership approach?
2. Do you support the idea of Stamford Hospital being advised by a Board of Governors which would include community representatives?
3. Do you support the idea of inviting other healthcare and social care organisations onto the hospital site to create a healthcare campus at Stamford Hospital?

Respondents were also offered the opportunity to comment on the questions and specifically to offer ideas as to which groups might be represented on the Board of Governors and what kind of organisations should be invited onto the proposed healthcare campus.

The consultation ran from 15 March 2007 – 22 June 2007. Responses were invited either on line or by post.

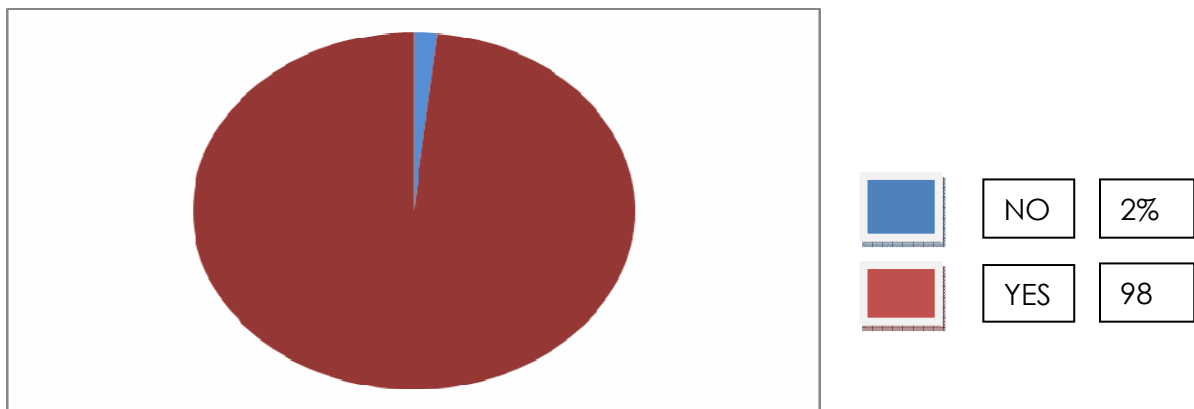
This report provides a simple breakdown of the results of that consultation and a short summary of the comments received. The full compendium of comments is contained in a separate Access database.

Results

A total of 1571 responses were received, of which 1498 were postal responses.

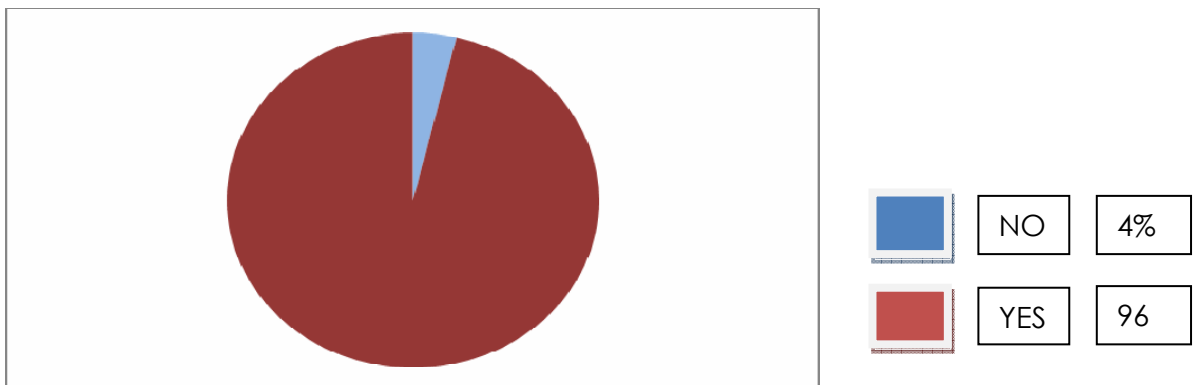
Q1) "I support the proposed new partnership approach"

1544 supported the approach.
27 people did not.



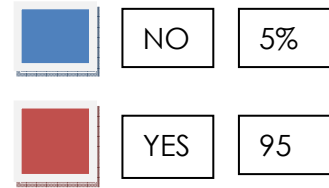
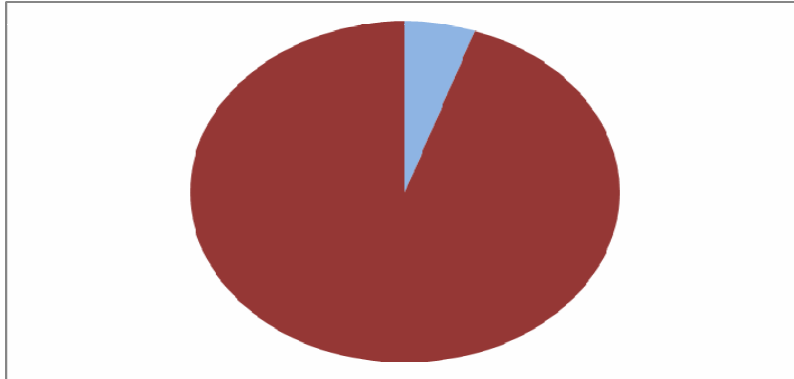
Q2) "Do you support the idea of Stamford Hospital being advised by a board of governors which would include community representatives?"

1512 people said yes.
59 people said no.



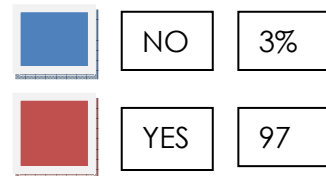
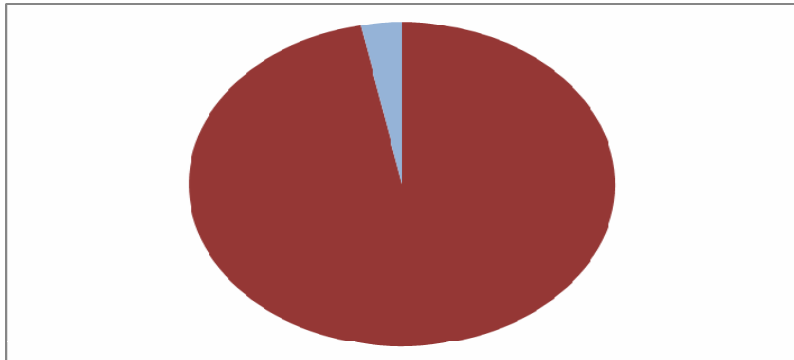
Q3) “Do you support the idea of inviting other healthcare and social care organisations onto the Hospital site to create a healthcare campus at Stamford Hospital?”

1488 supported the idea.
83 did not.



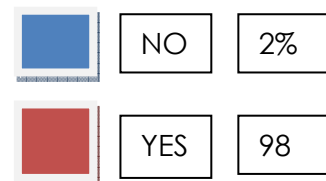
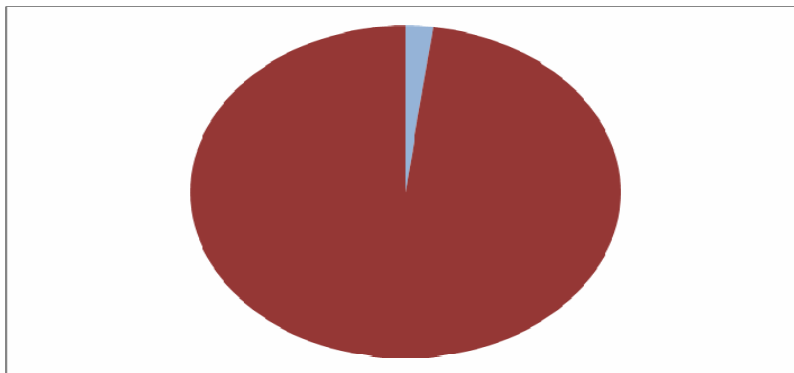
In addition respondents were asked whether they or a family member used services at Stamford Hospital in the past:

1476 had a family member or had used the Stamford Hospital Services before.
47 had not.



Respondents were also asked whether they were representing an organisation.

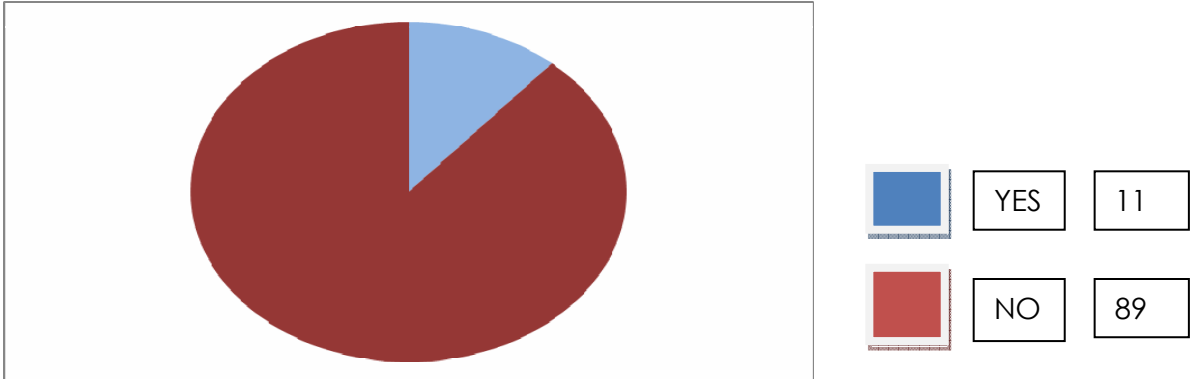
1539 were not representatives of an organisation.
32 were representing an organisation.



A list of those organisations that responded to the consultation is at Annex A*.

Respondents were finally asked if they would like to be contacted about becoming a member of Peterborough and Stamford Hospitals NHS Foundation Trust.

179 asked to be contacted.
1392 asked not to be contacted.



Summary of Comments

This section is a review and a summary of the comments made by the public; designed to provide a simple overview of the range of comments received.

Q1) “I support the proposed new partnership approach”

On the whole, people are of the opinion that any move to keep Stamford hospital local for its people is a good move. Any perceived improvements are also generally accepted. There is concern about the prospect of having to travel to Peterborough.

Positive comments

“I feel it is vital if it keeps the hospital in Stamford, as my ageing father needs the services. It is much easier to take him to Stamford than Peterborough, as it can be daunting for him.”

“Local decisions should be taken by informed local people.”

“...a great idea - anything to get Stamford Hospital caring for patients on site. Everyone misses the facilities we've lost...”

“This Hospital is an important element of health services to Stamford and District. In addition it has an important role in the healthcare structure of Peterborough Hospital which will benefit us all.”

Negative comments

“As long as it does not involve making another tier of administration and increase costs in the long run.”

“As long as it's not a talking shop; we need action. We want a real community hospital, get the funding and move forward.”

“What are the financial implications?”

“Why are all meetings on working day afternoons? This must alienate people who are truly interested in the project.”

Q2) “Do you support the idea of Stamford Hospital being advised by a board of governors which would include community representatives?”

The majority of people want a wide cross section of Stamford society to be represented on the 'Board of Governors'. In particular there was a desire to see representation of local GPs, health representatives and voluntary bodies (Age Concern, Help the Aged, Red Cross).

There were some comments about the potential conflict of interest that might arise from representation by Councillors or other political interest groups.

Positive comments

"A true cross-section of our diverse society."

"I think it important that whoever represents our community must be genuinely concerned for all those they represent."

"GP's, pensioners, other healthcare specialists eg. Dentists, Osteopaths, Stamford Council, local members of the public."

"Patient participation groups, local support groups for particular medical conditions, Age Concern/ Help the Aged, Evergreen Trust."

Negative comments

"Provided it doesn't make the link between GPs & hospitals more bureaucratic."

"No, if it costs more money we do not want a talking shop which will clog up any action."

"Not happy if Lincolnshire PCT department. Others OK."

"Doctors - No Politicians!"

Q3) "Do you support the idea of inviting other healthcare and social care organisations onto the Hospital site to create a healthcare campus at Stamford Hospital?"

On the whole, people think an assessment of local needs is required to gauge which Health organisations should be invited. I noticed that complementary medicines are often recommended for invitation (Acupuncture, Chiropody, Chiropractors), and that Mental Health and Dental (NHS) services are frequently mentioned. An underlying feel for alternative medicine is noticed in the comments. Non-profit organisations are welcomed.

Positive comments

"Yes as many as possible to make full use of the entire site as a centre for medical care of the highest quality."

"Complementary medicines: i.e. Physiotherapy, Chiropractor, Alzheimer's, social day care unit for people with Dementia."

"Private and NHS Health professionals- including Osteopaths, Physiotherapists, Podi Charity support groups like Help the Aged, Evergreen Trust, and Citizens Advice Bureau."

"Physiotherapists, Osteopaths, Acupuncturists, Homeopaths, sports injury professionals, family planning..."

Negative comments

"Not social care, this could mean too many interests competing for the facilities and space."

“Not commercial organisations- or few only.”

“Not private patients and no empty beds!”

“A good start has been made with Sheepmarket Dentist & Pharmacy Practice. What about an optician and other health related businesses? I am not keen on social care organisations.”

***Annex A – List of organisations responding to the consultation**

Age Concern Deepings	1
Barnack Womens Institute	1
Carlby Womens Institute	2
Womens Institute	1
Deepings Womens Institute	1
Deepings Womens Institute	1
Deepings Womens Institute	1
Deepings Womens Institute	1
Deeping St James Womens Institute	1
Deeping St James Womens Institute	1
Essex road complex, Stamford	1
Greetham Womens Institute	1
Family	3
Friends of Peterborough Hospital.	1
Lincolnshire County Council	1
Royal British Legion	1
Royal British Legion (Kingscliffe)	1
Sleepwalker Patients Group	1
Social Services	1
St John's Ambulance	2
Stamford U3A	3
Health Group of Stamford U3A	1
U3A	1
Warren Keep Residents' Association	1
Total	30

